



特殊塑膠杯應用接著劑

Adhesives for Plastic Kettles of Special Process

〔特殊壺類接著〕最近幾年各式各樣彩色冰水壺、塑膠杯的應用相繼推出，因為塑膠壺的壺把與壺身無法由射出機一體成型射出，所以UV樹脂無色透明、快速硬化的特性，成了主流接著劑的首選。

本公司在此產業不斷地開發各種特殊接著劑並做一連串的環境模擬測試，已有足夠成熟穩定的產品問世。

In recent years all kinds of colored pitchers and plastic kettles are coming out. These products make the different change for the plastic products in daily life. Because the handles and kettles can not be integrated by injection molding machines, these kinds of kettles need another special process. The photo-curing resin is suited for the plastic kettles bonding with its colorless and fast-curing properties. Our company develops various types' photo-curing adhesives which are passed the environmental test experiments. These characteristics making our products suited for plastics and glass bonding.

產品編號 Product Item.	黏度 Viscosity, cps	硬度 Durometer Hardness, Shore D	剪切力值 Shear Strength kgf / cm ²	伸長率 Elongation %	接著材質 Substrates	特色應用 Feature
GN744	3600~5000	69	112.20	92	有色PC、AS、MS、 壓克力 Colored PC、AS、MS and Acrylate	樹脂質韌，與基材產生優良接著力 The adhesive is tough and exhibits excellent adhesion strength.
GN844	9000~14000	63	110.16	80	有色AS、MS、壓克力 Colored PC、AS、MS and Acrylate	樹脂質韌，與基材產生優良接著力 The adhesive is tough and exhibits excellent adhesion strength.
GN344	3500~5100	45	76.52	64	各種更深顏色塑膠 all kinds of dark colored plastics	高感度硬化，對各種深色塑膠材質 產生優良接著力 The adhesive is high sensitive for curing and provides excellent adhesion strength.

壓克力材質冰水壺壺把與壺身
Acrylic handles and kettles



PC材質冰水壺壺把與壺身
PC handles and kettles



破壞測試基材拉裂狀況
Mechanical Test



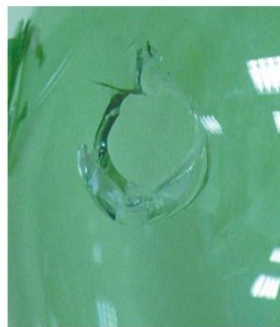
實際烘箱100°C荷重5KG / 8HR
Oven 100°C, load 5kg/8hr



本系列產品在此產業已生產超過5年，只要選擇適當的產品並確保壺把內的UV樹脂完全乾燥，就可以給客戶一份良好的保障。本公司實際荷重PC材質冰水壺100°C/8HR，並沒有發生脫膠現象，由於PC質韌，作破壞測試時較難材破，但作把手拉力測試時可達到100KG以上拉力。至於其他材質壓克力、PS、AS、MS，當客戶自行做把手破壞測試時，通常可達到材破的結果。如下圖：

These series adhesives are suited for the plastic kettles bonding. The adhesion strength of the adhesives is usually larger than the adhesion strength of plastics, so the substrates often fracture in the mechanical tests. As for the quality of tough PC materials with its large fracturing energy, it is hard to fracture in the tests.

However, these series adhesives will not have cohesive failure in the load capacity experiment tests (100°C/8hr). The adhesion strength of the adhesives for bonding PC handles is more than 100kg. Everwide Chemical Company researched and developed the adhesives for plastic kettles of special process during the passed five years. According to the properties, the client can choose the suitable adhesives for their products. The above test results are as following charts:



永寬化學股份有限公司 EVERWIDE CHEMICAL CO.,LTD

[Http://www.everwide.com.tw](http://www.everwide.com.tw)

總公司 雲林縣斗六市斗工六路36號

No.36, Dougong 6th Rd., Douliou City, Yunlin County
64069, Taiwan

TEL : 886-5-5574717 FAX : 886-5-5574719

E-mail : everwide@everwide.com.tw

分公司 桃園縣中壢市中山東路一段223巷89弄7號5樓

5F., No.7, Alley 89, Sec. 1, Jhongshan E. Rd., Jhongli City,
Taoyuan County 32087, Taiwan

TEL : 886-3-4342833 FAX : 886-3-4342835

授權經銷商 Distributors /