

Test Report

No. : CE/2019/B0255

Date : 2019/11/08

Page : 1 of 8

EVERWIDE CHEMICAL CO.

NO. 36, DOUGONG 6TH RD., DOULIU CITY, YUNLIN COUNTY 64069, TAIWAN


The following sample(s) was/were submitted and identified by/on behalf of the applicant as :

Sample Submitted By : EVERWIDE CHEMICAL CO.
Sample Description : EPOXY RESIN
Style/Item No. : PLEASE REFER TO PAGE 4
Sample Receiving Date : 2019/11/04
Testing Period : 2019/11/04 to 2019/11/08

=====
Test Requested : As specified by client, with reference to RoHS 2011/65/EU Annex II and amending Directive (EU) 2015/863 to determine Cadmium, Lead, Mercury, Cr(VI), PBBs, PBDEs, DBP, BBP, DEHP, DIBP contents in the submitted sample(s).

Test Method : Please refer to following pages.

Test Result(s) : Please refer to following pages.


Troy Chang / Manager - Tec
Signed for and behalf of
SGS TAIWAN LTD.
Chemical Laboratory - Taipei



This document is issued by the Company subject to its General Conditions of Service printed overleaf, available on request or accessible at <http://www.sgs.com/en/Terms-and-Conditions.aspx> and, for electronic format documents, subject to Terms and Conditions for Electronic Documents at <https://www.sgs.com/en/terms-and-conditions/terms-e-document>. Attention is drawn to the limitation of liability, indemnification and jurisdiction issues defined therein. Any holder of this document is advised that information contained hereon reflects the Company's findings at the time of its intervention only and within the limits of client's instruction, if any. The Company's sole responsibility is to its Client and this document does not exonerate parties to a transaction from exercising all their rights and obligations under the transaction documents. This document cannot be reproduced, except in full, without prior written approval of the Company. Any unauthorized alteration, forgery or falsification of the content or appearance of this document is unlawful and offenders may be prosecuted to the fullest extent of the law. Unless otherwise stated the results shown in this test report refer only to the sample(s) tested.

Test Report

No. : CE/2019/B0255

Date : 2019/11/08

Page : 2 of 8

EVERWIDE CHEMICAL CO.

NO. 36, DOUGONG 6TH RD., DOULIU CITY, YUNLIN COUNTY 64069, TAIWAN

Test Result(s)

PART NAME No.1 : PINK PASTE

Test Item(s)	Unit	Method	MDL	Result
				No.1
Cadmium (Cd)	mg/kg	With reference to IEC 62321-5 (2013) and performed by ICP-OES.	2	n.d.
Lead (Pb)	mg/kg	With reference to IEC 62321-5 (2013) and performed by ICP-OES.	2	n.d.
Mercury (Hg)	mg/kg	With reference to IEC 62321-4:2013+AMD1:2017 and performed by ICP-OES.	2	n.d.
Hexavalent Chromium Cr(VI) (◆)	mg/kg	With reference to IEC 62321-7-2 (2017) and performed by UV-VIS. ; With reference to IEC 62321-5 (2013) and performed by ICP-OES.	8	n.d.
Sum of PBBs	mg/kg	With reference to IEC 62321-6 (2015) and performed by GC/MS.	-	n.d.
Monobromobiphenyl	mg/kg		5	n.d.
Dibromobiphenyl	mg/kg		5	n.d.
Tribromobiphenyl	mg/kg		5	n.d.
Tetrabromobiphenyl	mg/kg		5	n.d.
Pentabromobiphenyl	mg/kg		5	n.d.
Hexabromobiphenyl	mg/kg		5	n.d.
Heptabromobiphenyl	mg/kg		5	n.d.
Octabromobiphenyl	mg/kg		5	n.d.
Nonabromobiphenyl	mg/kg		5	n.d.
Decabromobiphenyl	mg/kg		5	n.d.
Sum of PBDEs	mg/kg		-	n.d.
Monobromodiphenyl ether	mg/kg		5	n.d.
Dibromodiphenyl ether	mg/kg		5	n.d.
Tribromodiphenyl ether	mg/kg		5	n.d.
Tetrabromodiphenyl ether	mg/kg		5	n.d.
Pentabromodiphenyl ether	mg/kg		5	n.d.
Hexabromodiphenyl ether	mg/kg		5	n.d.
Heptabromodiphenyl ether	mg/kg		5	n.d.
Octabromodiphenyl ether	mg/kg		5	n.d.
Nonabromodiphenyl ether	mg/kg	5	n.d.	
Decabromodiphenyl ether	mg/kg	5	n.d.	

This document is issued by the Company subject to its General Conditions of Service printed overleaf, available on request or accessible at <http://www.sgs.com/en/Terms-and-Conditions.aspx> and, for electronic format documents, subject to Terms and Conditions for Electronic Documents at <https://www.sgs.com/en/terms-and-conditions/terms-e-document>. Attention is drawn to the limitation of liability, indemnification and jurisdiction issues defined therein. Any holder of this document is advised that information contained hereon reflects the Company's findings at the time of its intervention only and within the limits of client's instruction, if any. The Company's sole responsibility is to its Client and this document does not exonerate parties to a transaction from exercising all their rights and obligations under the transaction documents. This document cannot be reproduced, except in full, without prior written approval of the Company. Any unauthorized alteration, forgery or falsification of the content or appearance of this document is unlawful and offenders may be prosecuted to the fullest extent of the law. Unless otherwise stated the results shown in this test report refer only to the sample(s) tested.

Test Report

No. : CE/2019/B0255

Date : 2019/11/08

Page : 3 of 8

EVERWIDE CHEMICAL CO.

NO. 36, DOUGONG 6TH RD., DOULIU CITY, YUNLIN COUNTY 64069, TAIWAN

Test Item(s)	Unit	Method	MDL	Result
				No.1
DEHP (Di- (2-ethylhexyl) phthalate) (CAS No.: 117-81-7)	mg/kg	With reference to IEC 62321-8 (2017). Analysis was performed by GC/MS.	50	n.d.
BBP (Butyl Benzyl phthalate) (CAS No.: 85-68-7)	mg/kg		50	n.d.
DBP (Dibutyl phthalate) (CAS No.: 84-74-2)	mg/kg		50	n.d.
DIBP (Di-isobutyl phthalate) (CAS No.: 84-69-5)	mg/kg		50	n.d.

Note :

1. mg/kg = ppm ; 0.1wt% = 1000ppm
2. MDL = Method Detection Limit
3. n.d. = Not Detected = below MDL
4. " - " = Not Regulated
5. (◆) : The result of Cr(VI) is "n.d." as the result of Chromium (Cr) is less than the MDL of Cr(VI), and confirmation test of Cr(VI) is not required. If the Chromium (Cr) content is not less than the MDL of Cr(VI), confirmation test of Cr(VI) is required.

Test Report

No. : CE/2019/B0255

Date : 2019/11/08

Page : 4 of 8

EVERWIDE CHEMICAL CO.

NO. 36, DOUGONG 6TH RD., DOULIU CITY, YUNLIN COUNTY 64069, TAIWAN

Style/Item No.:

JD306-22、2001~2999-9 SERIES、7001~7999-99 SERIES、8001~8999 SERIES、EX001~EX999 SERIES、EXA001~EXZ999 SERIES、GE001~GE999-99 SERIES、JA001~JA999-99 SERIES、JB001~JB999-99 SERIES、JC001~JC999-99 SERIES、JD001~JD999-99 SERIES、JE001~JE999-99 SERIES、JG001~JG999-99 SERIES、NA001~NA999-99 SERIES、NC001~NC999-99 SERIES、NF001~NF999-99 SERIES、LG10-1~LG9999-99 SERIES、GN268-12、FP328、C-0001~C-9999 SERIES、H-001~H-9999-99 SERIES、HD00001-01~HD99999-99 SERIES、KE-2001~KE-3999 SERIES、XZ0001~XZ9999 SERIES、XZ001AA~XZ999ZZ SERIES、UT2000~UT2999 SERIES、UT2000-1~UT2999-99 SERIES、UT3000~UT3999 SERIES、UT3000-1~UT3999-99 SERIES、3531、353ND、353NDT、8416、8875、JB007、100~9999 SERIES、100-1~9999-99 SERIES、HQ001~HQ9999 SERIES、HQ001-1~HQ9999-99 SERIES、29S-001~29S-99999 SERIES、29S-001-1~29S-99999-99 SERIES、GN001~GN9999 SERIES、GN001-1~GN9999-99 SERIES、CA001~CA9999 SERIES、CA001-1~CA9999-99 SERIES、EX001~EX9999 SERIES、DB001-1~DB999-99 SERIES、7391、JC001-1~JC999-99 SERIES、YX001~YX999 SERIES、IR001~IR999 SERIES、HR001~HR999 SERIES、DH001~DH999 SERIES、LH001~LH999 SERIES、JT001~JT999 SERIES、TRA0001-01~TRA9999-99 SERIES、GH-0000~GH-9999 SERIES、55646、55577、55484、55150、55780、6093、D85、D86、D87、D88、D89、D95、D96、D97、D98、D99、EX5695、EX5696、EX5697、EX5698、EX5699、EX5699-1、EX6025、EX6026、EX6027、EX6028、EX6029、EP048、FW-001~FW999 SERIES、GH-5022、GH-5033、GH-5066、GH-5099、E001-1A~E999-99Z SERIES、DF001~DF9999 SERIES、DF001-1~DF9999-1 SERIES、CSY-08、DF813、DF361、COT0001~COT9999、CBD0001~CBD9999

This document is issued by the Company subject to its General Conditions of Service printed overleaf, available on request or accessible at <http://www.sgs.com/en/Terms-and-Conditions.aspx> and, for electronic format documents, subject to Terms and Conditions for Electronic Documents at <https://www.sgs.com/en/terms-and-conditions/terms-e-document>. Attention is drawn to the limitation of liability, indemnification and jurisdiction issues defined therein. Any holder of this document is advised that information contained hereon reflects the Company's findings at the time of its intervention only and within the limits of client's instruction, if any. The Company's sole responsibility is to its Client and this document does not exonerate parties to a transaction from exercising all their rights and obligations under the transaction documents. This document cannot be reproduced, except in full, without prior written approval of the Company. Any unauthorized alteration, forgery or falsification of the content or appearance of this document is unlawful and offenders may be prosecuted to the fullest extent of the law. Unless otherwise stated the results shown in this test report refer only to the sample(s) tested.

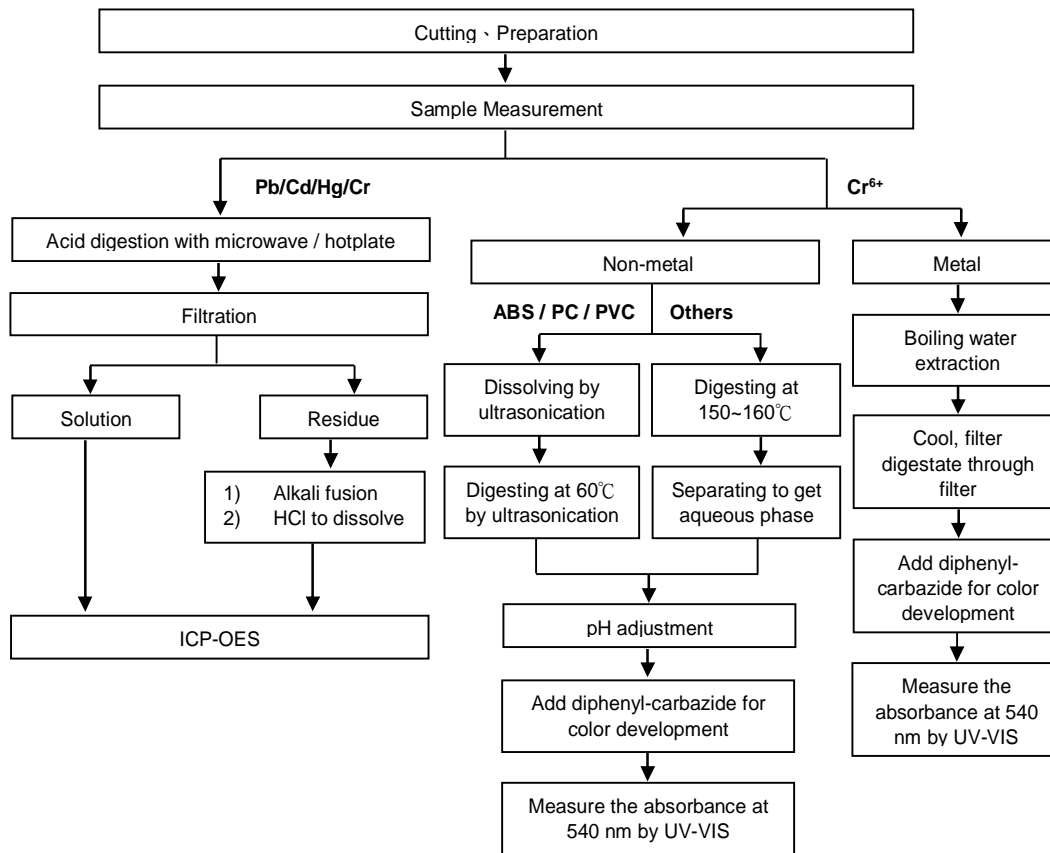
EVERWIDE CHEMICAL CO.

NO. 36, DOUGONG 6TH RD., DOULIU CITY, YUNLIN COUNTY 64069, TAIWAN

Analytical flow chart of Heavy Metal

These samples were dissolved totally by pre-conditioning method according to below flow chart. (Cr⁶⁺ test method excluded)

- Technician : Rita Chen
- Supervisor: Troy Chang

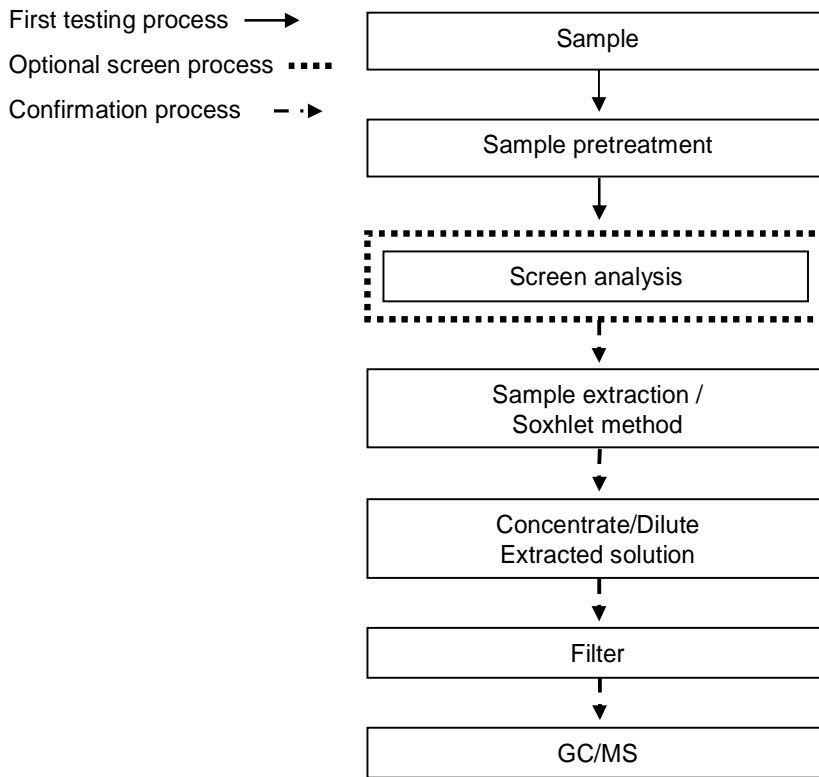


EVERWIDE CHEMICAL CO.

NO. 36, DOUGONG 6TH RD., DOULIU CITY, YUNLIN COUNTY 64069, TAIWAN

Analytical flow chart – PBB / PBDE

- Technician : Yaling Tu
- Supervisor: Troy Chang



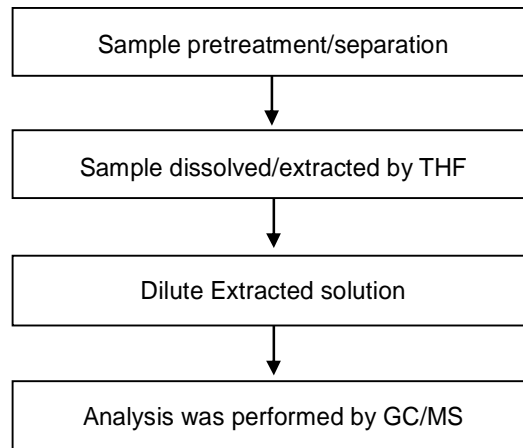
This document is issued by the Company subject to its General Conditions of Service printed overleaf, available on request or accessible at <http://www.sgs.com/en/Terms-and-Conditions.aspx> and, for electronic format documents, subject to Terms and Conditions for Electronic Documents at <https://www.sgs.com/en/terms-and-conditions/terms-e-document>. Attention is drawn to the limitation of liability, indemnification and jurisdiction issues defined therein. Any holder of this document is advised that information contained hereon reflects the Company's findings at the time of its intervention only and within the limits of client's instruction, if any. The Company's sole responsibility is to its Client and this document does not exonerate parties to a transaction from exercising all their rights and obligations under the transaction documents. This document cannot be reproduced, except in full, without prior written approval of the Company. Any unauthorized alteration, forgery or falsification of the content or appearance of this document is unlawful and offenders may be prosecuted to the fullest extent of the law. Unless otherwise stated the results shown in this test report refer only to the sample(s) tested.

EVERWIDE CHEMICAL CO.

NO. 36, DOUGONG 6TH RD., DOULIU CITY, YUNLIN COUNTY 64069, TAIWAN

Analytical flow chart - Phthalate

- Technician: Yaling Tu
- Supervisor: Troy Chang

【Test method: IEC 62321-8】

This document is issued by the Company subject to its General Conditions of Service printed overleaf, available on request or accessible at <http://www.sgs.com/en/Terms-and-Conditions.aspx> and, for electronic format documents, subject to Terms and Conditions for Electronic Documents at <https://www.sgs.com/en/terms-and-conditions/terms-e-document>. Attention is drawn to the limitation of liability, indemnification and jurisdiction issues defined therein. Any holder of this document is advised that information contained hereon reflects the Company's findings at the time of its intervention only and within the limits of client's instruction, if any. The Company's sole responsibility is to its Client and this document does not exonerate parties to a transaction from exercising all their rights and obligations under the transaction documents. This document cannot be reproduced, except in full, without prior written approval of the Company. Any unauthorized alteration, forgery or falsification of the content or appearance of this document is unlawful and offenders may be prosecuted to the fullest extent of the law. Unless otherwise stated the results shown in this test report refer only to the sample(s) tested.

Test Report

No. : CE/2019/B0255

Date : 2019/11/08

Page : 8 of 8

EVERWIDE CHEMICAL CO.

NO. 36, DOUGONG 6TH RD., DOULIU CITY, YUNLIN COUNTY 64069, TAIWAN

* The tested sample / part is marked by an arrow if it's shown on the photo. *

CE/2019/B0255



** End of Report **

This document is issued by the Company subject to its General Conditions of Service printed overleaf, available on request or accessible at <http://www.sgs.com/en/Terms-and-Conditions.aspx> and, for electronic format documents, subject to Terms and Conditions for Electronic Documents at <https://www.sgs.com/en/terms-and-conditions/terms-e-document>. Attention is drawn to the limitation of liability, indemnification and jurisdiction issues defined therein. Any holder of this document is advised that information contained herein reflects the Company's findings at the time of its intervention only and within the limits of client's instruction, if any. The Company's sole responsibility is to its Client and this document does not exonerate parties to a transaction from exercising all their rights and obligations under the transaction documents. This document cannot be reproduced, except in full, without prior written approval of the Company. Any unauthorized alteration, forgery or falsification of the content or appearance of this document is unlawful and offenders may be prosecuted to the fullest extent of the law. Unless otherwise stated the results shown in this test report refer only to the sample(s) tested.