



# Test Report

No.: ETR23903607

Date: 06-Oct-2023

Page: 1 of 8

EVERWIDE CHEMICAL CO., LTD.

NO. 36, DOUGONG 6TH RD., DOULIU CITY, YUNLIN COUNTY 640153, TAIWAN

The following sample(s) was/were submitted and identified by the applicant as:

Sample Submitted By : EVERWIDE CHEMICAL CO., LTD.

Sample Name : EPOXY RESIN

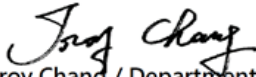
Style/Item No. : PLEASE REFER TO PAGE 2

=====  
Sample Receiving Date : 22-Sep-2023

Testing Period : 22-Sep-2023 to 06-Oct-2023

Test Requested : As specified by client, with reference to RoHS 2011/65/EU Annex II and amending Directive (EU) 2015/863 to determine Cadmium, Lead, Mercury, Cr(VI), PBBs, PBDEs, DBP, BBP, DEHP, DIBP contents in the submitted sample(s).

Test Results : Please refer to following pages.

  
Troy Chang / Department Manager  
Signed for and on behalf of  
SGS TAIWAN LTD.  
Chemical Laboratory - Taipei



PIN CODE: 7F814EC1

This document is issued by the Company subject to its General Conditions of Service printed overleaf, available on request or accessible at <https://www.sgs.com.tw/terms-of-service> and, for electronic format documents, subject to Terms and Conditions for Electronic Documents at <https://www.sgs.com.tw/terms-of-service>. Attention is drawn to the limitation of liability, indemnification and jurisdiction issues defined therein. Any holder of this document is advised that information contained hereon reflects the Company's findings at the time of its intervention only and within the limits of client's instruction, if any. The Company's sole responsibility is to its Client and this document does not exonerate parties to a transaction from exercising all their rights and obligations under the transaction documents. This document cannot be reproduced, except in full, without prior written approval of the Company. Any unauthorized alteration, forgery or falsification of the content or appearance of this document is unlawful and offenders may be prosecuted to the fullest extent of the law. Unless otherwise stated the results shown in this test report refer only to the sample(s) tested.

EVERWIDE CHEMICAL CO., LTD.

NO. 36, DOUGONG 6TH RD., DOULIU CITY, YUNLIN COUNTY 640153, TAIWAN

Style/Item No. :

JD306-22、0001-01~9999-99 SERIES、2001~8999-99 SERIES、EXA001~EXC999 SERIES、  
GE001~GE999-99 SERIES、JA001~JA999-99 SERIES、JB001~JB999-99 SERIES、JC001~JC999-99 SERIES、  
JD001~JD999-99 SERIES、JE001~JE999-99 SERIES、JF001~JF999-99 SERIES、JG001~JG999-99 SERIES、  
JH001~JH999-99 SERIES、NA001~NA999-99 SERIES、NC001~NC999-99 SERIES、  
NF001~NF999-99 SERIES、NH001~NH999-99 SERIES、KNE001~KNE999-99 SERIES、  
CBD001~CBD999-99 SERIES、COT001~COT999-99 SERIES、BA001~BA999-99 SERIES、  
CX001~CX999-99 SERIES、AS001~AS999 SERIES、JM0001~JM9999 SERIES、HEM0001~9999 SERIES、  
EPH0001~9999 SERIES、PA0001~9999 SERIES、JA1201、JA1202、JA1203、JA1204、JA1205、  
JA1206、DB0001-01~DB9999~99 SERIES、COT001-01~COT9999-99 SERIES、  
CBD001-01~CBD9999-99 SERIES、CBDN0001-01A~CBDN0000~99Z SERIES、BA001~999 SERIES、  
TRA0001-01~TRA9999-99 SERIES、XYH-TK0001-01~XYH-TK9999-99 SERIES、55646、55577、  
55484、55150、55780、55880、55990、6093、D65、D66、D67、D68、D69、D75、D76、D77、  
D78、D79、D85、D86、D87、D88、D89、D95、D95-1、D96、D97、D98、D99、EX5695、EX5696、  
EX5697、EX5698、EX5699、EX5699-1、EX5699-2、EX6025、EX6026、EX6027、EX6028、EX6029、  
EX7025、EX7026、EX7027、EX7028、EX7029、EX7209、EX8025、EX8026、EX8027、EX8028、  
EX8029、HS001-9999 SERIES、HD00001-01~HD99999-99 SERIES、E001-1A~E999-99Z SERIES、  
UT3000~UT3999 SERIES、UT3000-1~UT3999-99 SERIES、XZ0001~XZ9999 SERIES、  
XZ001AA-XZ999ZZ SERIES、KE-200~3999 SERIES、GH-0000~GH-9999 SERIES、  
29S-001~29S-99999-99 SERIES、SB001~SB9999-99 SERIES、C-001-01~C-9999-99 SERIES、  
YX001~YX999 SERIES、DH001~DH999 SERIES、HR001~HR999 SERIES、HL001~HL999 SERIES、  
IR001~IR999 SERIES、LH001~LH999 SERIES、PLB001~PLB999 SERIES、GN268-12、FP328、  
LG0001-01~LG9999-99 SERIES、29S-217、29S-331、29S-3220、EX0001~EX9999 SERIES、  
D00-0~D99-9 SERIES、EX9025、EX9026、EX9027、EX9028、EX9029、  
DB001-01~DB999-99 SERIES、DB701-63、DB722、CB3671、CB3672、CB3673、CB3674、  
CB3675、CB3676、CB3677、CB3678、HS521、PS001~PS999-99 SERIES、  
ES0001~ES9999 SERIES,ET0001~ET9999 SERIES

This document is issued by the Company subject to its General Conditions of Service printed overleaf, available on request or accessible at <https://www.sgs.com.tw/terms-of-service> and, for electronic format documents, subject to Terms and Conditions for Electronic Documents at <https://www.sgs.com.tw/terms-of-service>. Attention is drawn to the limitation of liability, indemnification and jurisdiction issues defined therein. Any holder of this document is advised that information contained hereon reflects the Company's findings at the time of its intervention only and within the limits of client's instruction, if any. The Company's sole responsibility is to its Client and this document does not exonerate parties to a transaction from exercising all their rights and obligations under the transaction documents. This document cannot be reproduced, except in full, without prior written approval of the Company. Any unauthorized alteration, forgery or falsification of the content or appearance of this document is unlawful and offenders may be prosecuted to the fullest extent of the law. Unless otherwise stated the results shown in this test report refer only to the sample(s) tested.

# Test Report

No.: ETR23903607

Date: 06-Oct-2023

Page: 3 of 8

EVERWIDE CHEMICAL CO., LTD.

NO. 36, DOUGONG 6TH RD., DOULIU CITY, YUNLIN COUNTY 640153, TAIWAN

## Test Part Description

No.1 : PINK PASTE

## Test Result(s)

Test Item(s)	Method	Unit	MDL	Result
				No.1
Cadmium (Cd)	With reference to IEC 62321-5: 2013, analysis was performed by ICP-OES.	mg/kg	2	n.d.
Lead (Pb)		mg/kg	2	n.d.
Mercury (Hg)	With reference to IEC 62321-4: 2013+ AMD1: 2017, analysis was performed by ICP-OES.	mg/kg	2	n.d.
Hexavalent Chromium Cr(VI)	With reference to IEC 62321-7-2: 2017, analysis was performed by UV-VIS.	mg/kg	8	n.d.
Monobromobiphenyl	With reference to IEC 62321-6: 2015, analysis was performed by GC/MS.	mg/kg	5	n.d.
Dibromobiphenyl		mg/kg	5	n.d.
Tribromobiphenyl		mg/kg	5	n.d.
Tetrabromobiphenyl		mg/kg	5	n.d.
Pentabromobiphenyl		mg/kg	5	n.d.
Hexabromobiphenyl		mg/kg	5	n.d.
Heptabromobiphenyl		mg/kg	5	n.d.
Octabromobiphenyl		mg/kg	5	n.d.
Nonabromobiphenyl		mg/kg	5	n.d.
Decabromobiphenyl		mg/kg	5	n.d.
<b>Sum of PBBs</b>		mg/kg	-	n.d.
Monobromodiphenyl ether	With reference to IEC 62321-6: 2015, analysis was performed by GC/MS.	mg/kg	5	n.d.
Dibromodiphenyl ether		mg/kg	5	n.d.
Tribromodiphenyl ether		mg/kg	5	n.d.
Tetrabromodiphenyl ether		mg/kg	5	n.d.
Pentabromodiphenyl ether		mg/kg	5	n.d.
Hexabromodiphenyl ether		mg/kg	5	n.d.
Heptabromodiphenyl ether		mg/kg	5	n.d.
Octabromodiphenyl ether		mg/kg	5	n.d.
Nonabromodiphenyl ether		mg/kg	5	n.d.
Decabromodiphenyl ether		mg/kg	5	n.d.
<b>Sum of PBDEs</b>		mg/kg	-	n.d.

This document is issued by the Company subject to its General Conditions of Service printed overleaf, available on request or accessible at <https://www.sgs.com.tw/terms-of-service> and, for electronic format documents, subject to Terms and Conditions for Electronic Documents at <https://www.sgs.com.tw/terms-of-service>. Attention is drawn to the limitation of liability, indemnification and jurisdiction issues defined therein. Any holder of this document is advised that information contained hereon reflects the Company's findings at the time of its intervention only and within the limits of client's instruction, if any. The Company's sole responsibility is to its Client and this document does not exonerate parties to a transaction from exercising all their rights and obligations under the transaction documents. This document cannot be reproduced, except in full, without prior written approval of the Company. Any unauthorized alteration, forgery or falsification of the content or appearance of this document is unlawful and offenders may be prosecuted to the fullest extent of the law. Unless otherwise stated the results shown in this test report refer only to the sample(s) tested.

# Test Report

No.: ETR23903607

Date: 06-Oct-2023

Page: 4 of 8

EVERWIDE CHEMICAL CO., LTD.

NO. 36, DOUGONG 6TH RD., DOULIU CITY, YUNLIN COUNTY 640153, TAIWAN

Test Item(s)	Method	Unit	MDL	Result
				No.1
Butyl benzyl phthalate (BBP)	With reference to IEC 62321-8: 2017, analysis was performed by GC/MS.	mg/kg	50	n.d.
Dibutyl phthalate (DBP)		mg/kg	50	n.d.
Diisobutyl phthalate (DIBP)		mg/kg	50	n.d.
Di-(2-ethylhexyl) phthalate (DEHP)		mg/kg	50	n.d.

**Note :**

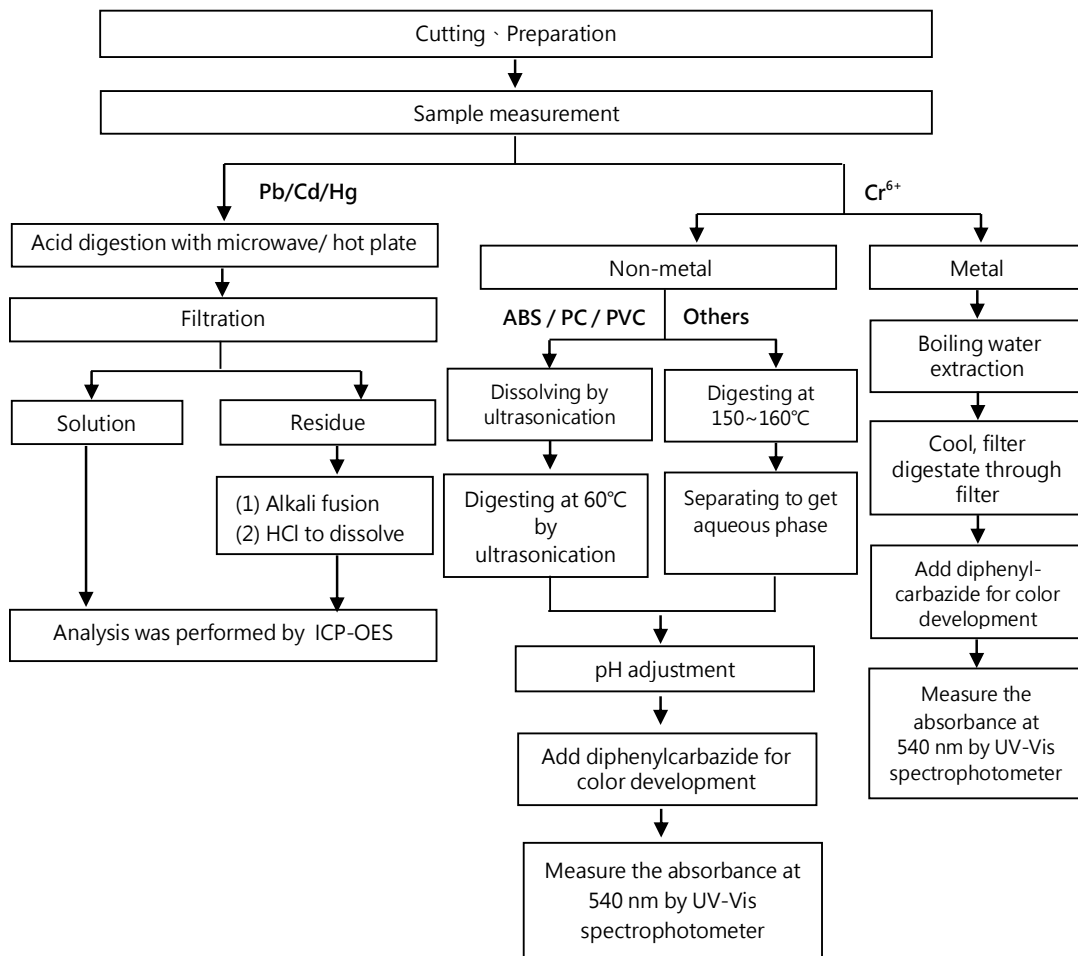
1. mg/kg = ppm ; 0.1wt% = 0.1% = 1000ppm
2. MDL = Method Detection Limit
3. n.d. = Not Detected ( Less than MDL)
4. "-" = Not Regulated

This document is issued by the Company subject to its General Conditions of Service printed overleaf, available on request or accessible at <https://www.sgs.com.tw/terms-of-service> and, for electronic format documents, subject to Terms and Conditions for Electronic Documents at <https://www.sgs.com.tw/terms-of-service>. Attention is drawn to the limitation of liability, indemnification and jurisdiction issues defined therein. Any holder of this document is advised that information contained hereon reflects the Company's findings at the time of its intervention only and within the limits of client's instruction, if any. The Company's sole responsibility is to its Client and this document does not exonerate parties to a transaction from exercising all their rights and obligations under the transaction documents. This document cannot be reproduced, except in full, without prior written approval of the Company. Any unauthorized alteration, forgery or falsification of the content or appearance of this document is unlawful and offenders may be prosecuted to the fullest extent of the law. Unless otherwise stated the results shown in this test report refer only to the sample(s) tested.

## Analytical flow chart of heavy metal

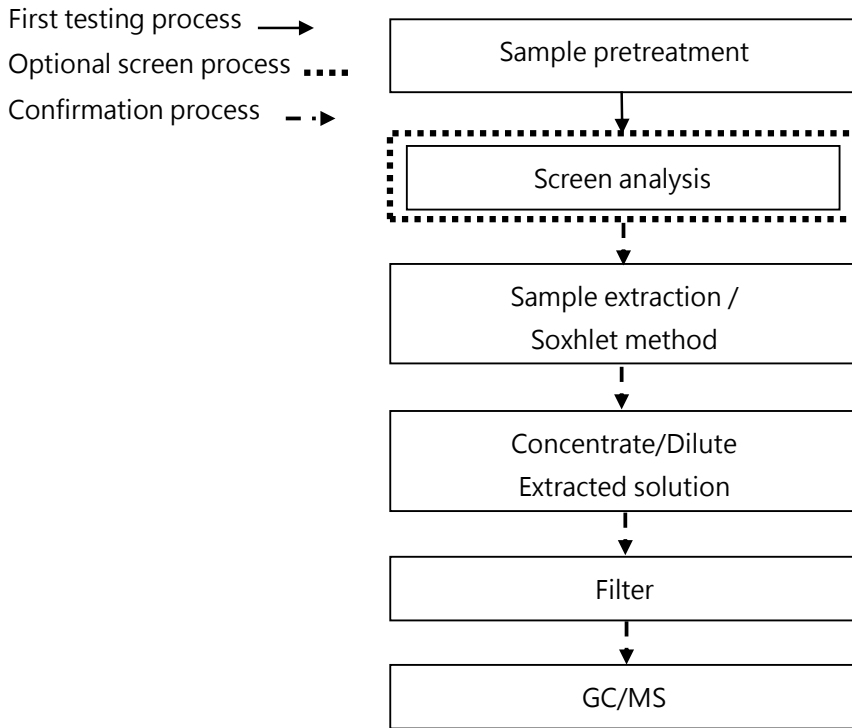
These samples were dissolved totally by pre-conditioning method according to below flow chart.

( Cr<sup>6+</sup> test method excluded )



This document is issued by the Company subject to its General Conditions of Service printed overleaf, available on request or accessible at <https://www.sgs.com.tw/terms-of-service> and, for electronic format documents, subject to Terms and Conditions for Electronic Documents at <https://www.sgs.com.tw/terms-of-service>. Attention is drawn to the limitation of liability, indemnification and jurisdiction issues defined therein. Any holder of this document is advised that information contained hereon reflects the Company's findings at the time of its intervention only and within the limits of client's instruction, if any. The Company's sole responsibility is to its Client and this document does not exonerate parties to a transaction from exercising all their rights and obligations under the transaction documents. This document cannot be reproduced, except in full, without prior written approval of the Company. Any unauthorized alteration, forgery or falsification of the content or appearance of this document is unlawful and offenders may be prosecuted to the fullest extent of the law. Unless otherwise stated the results shown in this test report refer only to the sample(s) tested.

### Analytical flow chart – PBBs / PBDEs

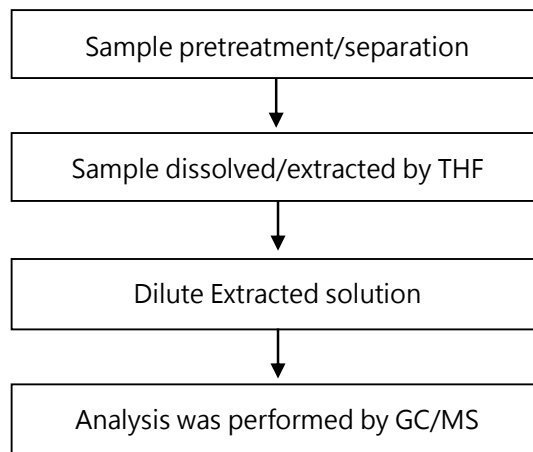


This document is issued by the Company subject to its General Conditions of Service printed overleaf, available on request or accessible at <https://www.sgs.com.tw/terms-of-service> and, for electronic format documents, subject to Terms and Conditions for Electronic Documents at <https://www.sgs.com.tw/terms-of-service>. Attention is drawn to the limitation of liability, indemnification and jurisdiction issues defined therein. Any holder of this document is advised that information contained hereon reflects the Company's findings at the time of its intervention only and within the limits of client's instruction, if any. The Company's sole responsibility is to its Client and this document does not exonerate parties to a transaction from exercising all their rights and obligations under the transaction documents. This document cannot be reproduced, except in full, without prior written approval of the Company. Any unauthorized alteration, forgery or falsification of the content or appearance of this document is unlawful and offenders may be prosecuted to the fullest extent of the law. Unless otherwise stated the results shown in this test report refer only to the sample(s) tested.

EVERWIDE CHEMICAL CO., LTD.

NO. 36, DOUGONG 6TH RD., DOULIU CITY, YUNLIN COUNTY 640153, TAIWAN

## Analytical flow chart - Phthalate

**【Test method: IEC 62321-8】**

This document is issued by the Company subject to its General Conditions of Service printed overleaf, available on request or accessible at <https://www.sgs.com.tw/terms-of-service> and, for electronic format documents, subject to Terms and Conditions for Electronic Documents at <https://www.sgs.com.tw/terms-of-service>. Attention is drawn to the limitation of liability, indemnification and jurisdiction issues defined therein. Any holder of this document is advised that information contained hereon reflects the Company's findings at the time of its intervention only and within the limits of client's instruction, if any. The Company's sole responsibility is to its Client and this document does not exonerate parties to a transaction from exercising all their rights and obligations under the transaction documents. This document cannot be reproduced, except in full, without prior written approval of the Company. Any unauthorized alteration, forgery or falsification of the content or appearance of this document is unlawful and offenders may be prosecuted to the fullest extent of the law. Unless otherwise stated the results shown in this test report refer only to the sample(s) tested.

## Test Report

No.: ETR23903607

Date: 06-Oct-2023

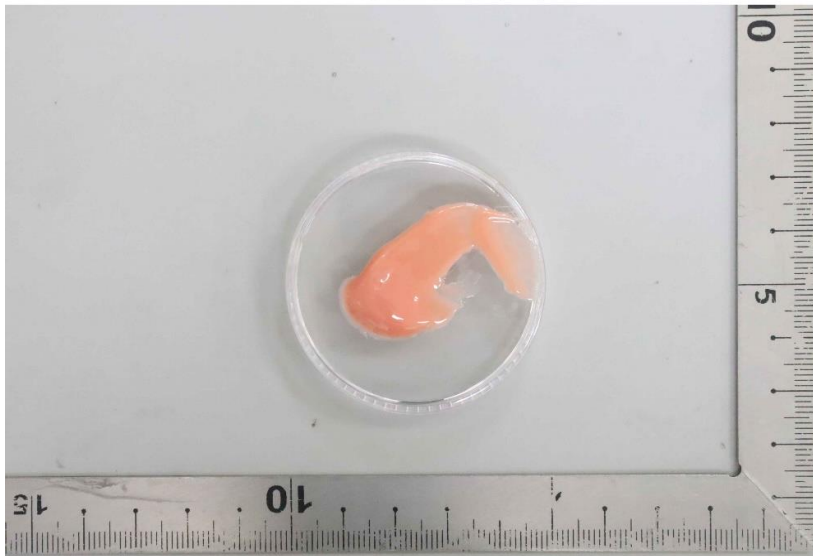
Page: 8 of 8

EVERWIDE CHEMICAL CO., LTD.

NO. 36, DOUGONG 6TH RD., DOULIU CITY, YUNLIN COUNTY 640153, TAIWAN

\* The tested sample / part is marked by an arrow if it's shown on the photo. \*

### ETR23903607



\*\* End of Report \*\*

This document is issued by the Company subject to its General Conditions of Service printed overleaf, available on request or accessible at <https://www.sgs.com.tw/terms-of-service> and, for electronic format documents, subject to Terms and Conditions for Electronic Documents at <https://www.sgs.com.tw/terms-of-service>. Attention is drawn to the limitation of liability, indemnification and jurisdiction issues defined therein. Any holder of this document is advised that information contained hereon reflects the Company's findings at the time of its intervention only and within the limits of client's instruction, if any. The Company's sole responsibility is to its Client and this document does not exonerate parties to a transaction from exercising all their rights and obligations under the transaction documents. This document cannot be reproduced, except in full, without prior written approval of the Company. Any unauthorized alteration, forgery or falsification of the content or appearance of this document is unlawful and offenders may be prosecuted to the fullest extent of the law. Unless otherwise stated the results shown in this test report refer only to the sample(s) tested.